

UNIVERSAL RIP SWITCH

UBR02



PRODUCT OVERVIEW

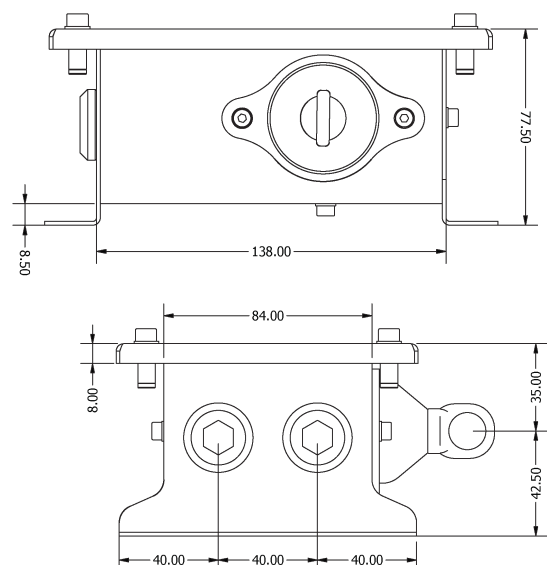
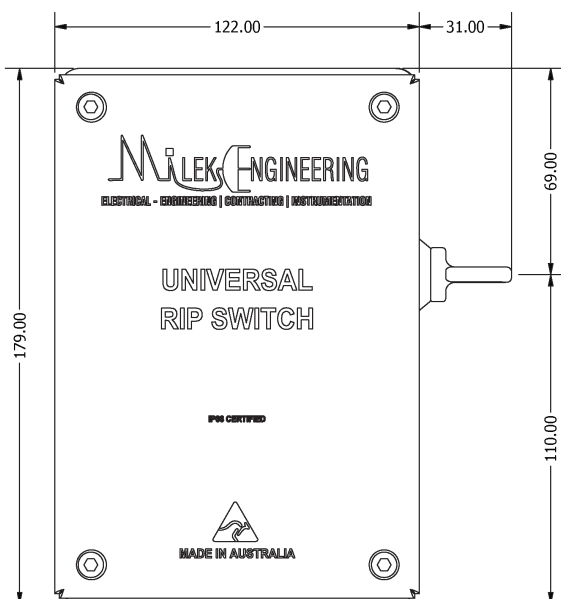
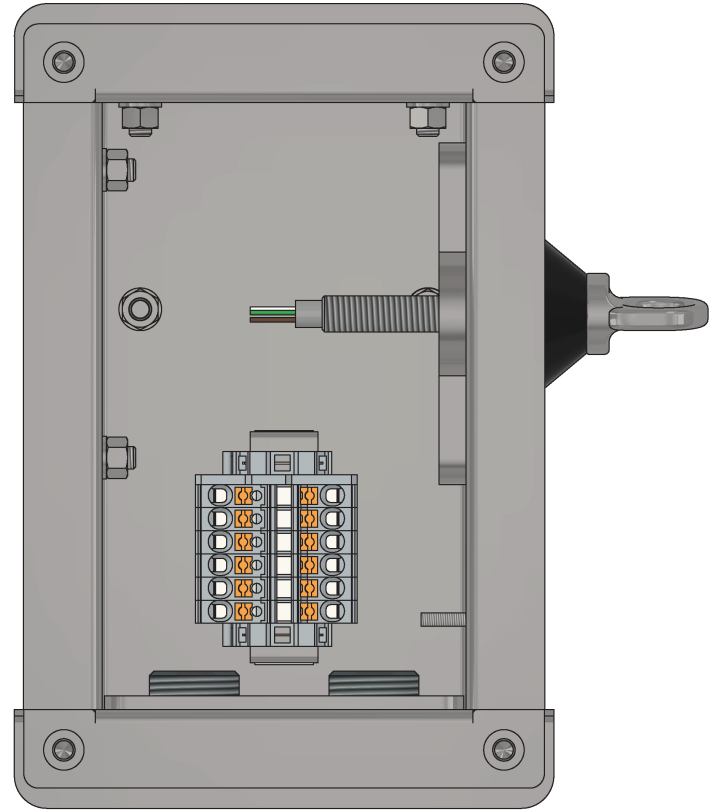
PRODUCT INFORMATION

The Universal Rip Switch is utilised to provide belt integrity detection as per AS4024.3611 which imposes mandatory requirements for rips and tears in conveyor belting.

The "Universal" term refers to the ability for 4 possible locations for the receiver; top, left, right and rear.

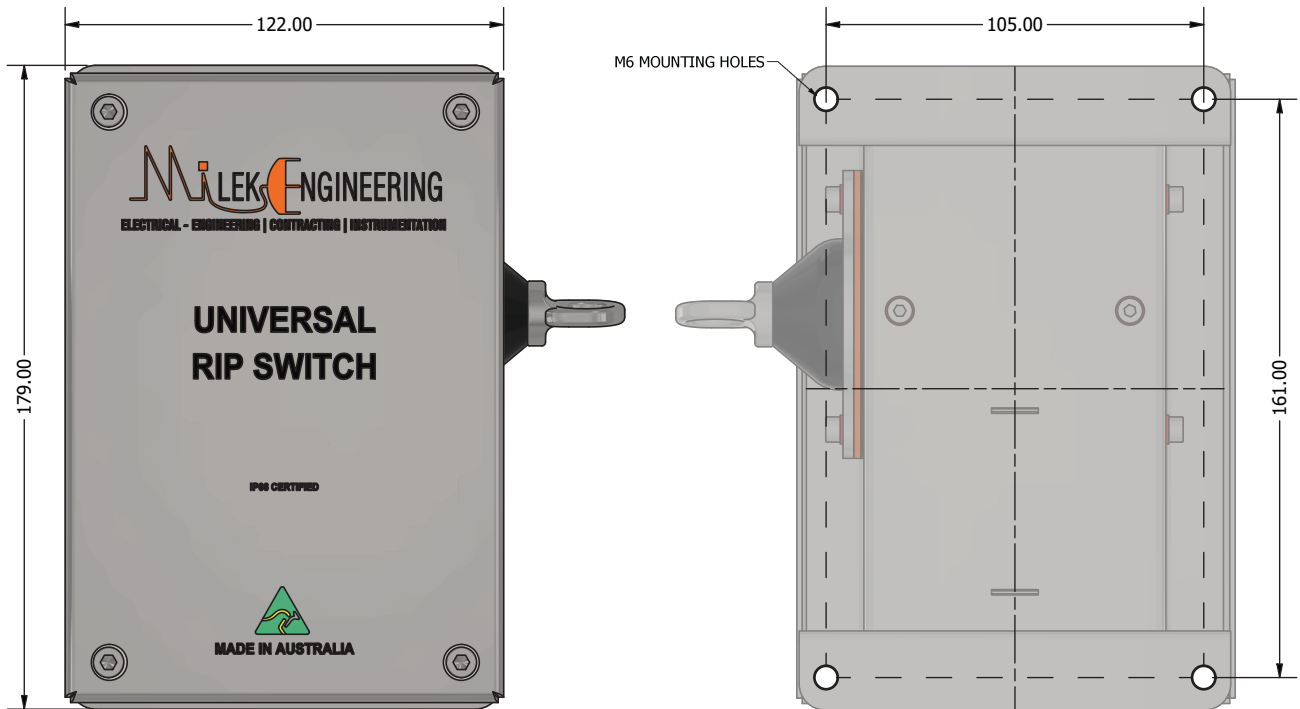
KEY ADVANTAGES

- Australian design & manufacture.
- Robust G316 stainless steel enclosure.
- IP66 construction providing robust ingress protection.
- Single spare requirement.
- No mechanical Switches to corrode.
- More robust if water ingress or prolonged sun exposure occurs.
- Additional protection lines can be added to a single device.
- Cord provided with tensioning rope grips to accommodate belt width up to 2.5m.
- Classified as a simple switch device under AS60079.



PRODUCT OVERVIEW

MOUNTING INFORMATION



CONNECTIONS

The reed switch configuration is a single pole double throw changeover switch.

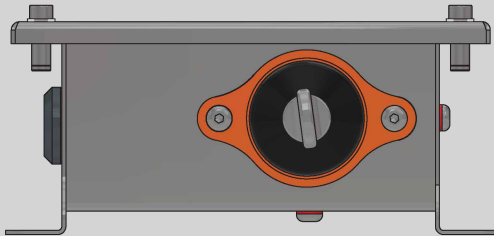


ADJUSTMENTS

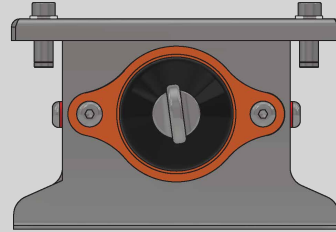
RELOCATING RECEIVER

UNIVERSAL RECEIVER LOCATIONS

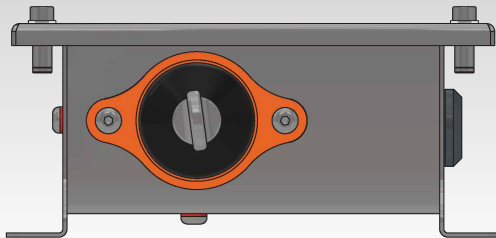
LEFT MOUNTED
(FACTORY SET POSITION)



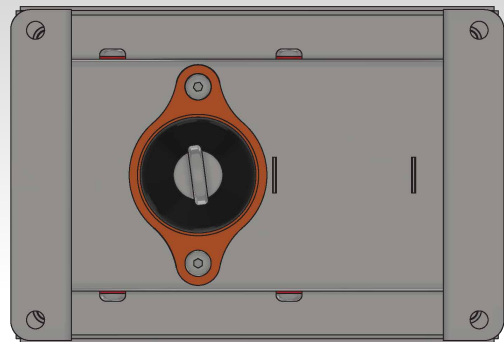
TOP MOUNTED



RIGHT MOUNTED

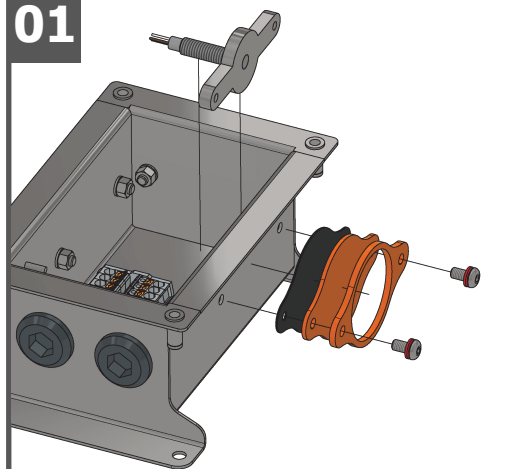


REAR MOUNTED



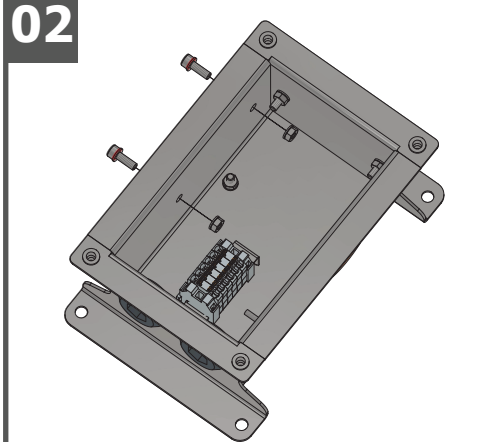
The location of the actuator can be changed simply by moving the backing plate from current location to one of the other 3 locations as shown below.
Any screws removed must be re-installed to maintain water ingress protection.

01



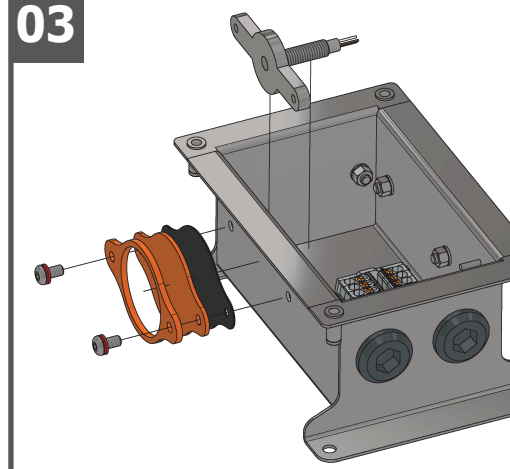
REMOVE FASTENERS AND REMOVE LOCATING PLATE AND RECEIVER PLATE FROM EXISTING LOCATION

02



REMOVE FASTENERS FROM MOUNTING HOLES OF NEW RECEIVER LOCATION AND REINSERT IN PLACE OF PREVIOUS MOUNTING POSITION

03



REINSERT LOCATING & RECEIVER PLATES TO ALIGN WITH HOLES IN ENCLOSURE. REINSERT FASTENERS TO SECURE.

07

TEST THE DEVICE FUNCTIONS CORRECTLY



TECHNICAL SPECIFICATIONS

ENCLOSURE SPECIFICATIONS

1.5mm G316 STAINLESS STEEL
IP66 CERTIFIED

SWITCHING DEVICE SPECIFICATIONS

RATED POWER (MAX) ANY DC COMBINATION OF V&A NOT TO EXCEED THEIR INDIVIDUAL MAX'S	10W
SWITCHING VOLTAGE (MAX) DC OR PEAK AC	175V
SWITCHING CURRENT (MAX) DC OR PEAK AC	0.5A
CARRY CURRENT (MAX) DC OR PEAK AC	1A
CONSTANT RESISTANCE (MAX) @ 0.5V & 50mA	150mΩ
BREAKDOWN VOLTAGE (MIN) ACCORDING TO EN60255-5	0.2kVDC
OPERATING TIME (MAX) INCL. BOUNCE; MEASURE W/ NOMINAL VOLTAGE	0.7ms
RELEASE TIME (MAX) MEASURED WITH NO COIL EXCITATION	1.5ms
INSULATION RESISTANCE (TYP) RH<45%, 100V TEST VOLTAGE	10GΩ
SHOCK RESISTANCE (MAX) 1/2 SINE WAVE DURATION	50g
VIBRATION RESISTANCE (MAX)	20g
OPERATING TEMPERATURE CABLE NOT MOVED	-30 to 70°C
OPERATING TEMPERATURE CABLE MOVED	-5 to 70°C
STORAGE TEMPERATURE	-30 to 70°C

SPARE PARTS

BELT RIP ACTUATOR	RS01
BELT RIP RECEIVER PLATE	RS02
UNIVERSAL REED SWITCH	RS03
BELT ROPE KIT	RS04
BELT RIP SWITCHING KIT	RS05